

### Detention Deadlock Prep (DDP) ►

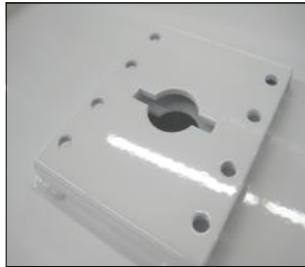
Provided standard with the SP or HSP access panels & all Security & Detention Extinguisher, Valve & Hose Cabinets at no charge.

The door will be prepped for a right-handed, heavy-duty lock to be provided and installed by others.

The prep plate is factory welded, primed & painted as an integral part of the door.

Lock and mounting bolts are not included - please specify the manufacturer and model number of the lock to ensure compatibility.

JL Can provide lock model 5010 at additional cost.



### ◀ Detention Slam Lock Prep (DSP)

This option is available at additional cost and includes a door which is prepped for a detention slam latch to be provided and installed by others. The prep plate is factory welded, primed & painted as an integral part of the door.

Lock and mounting bolts are not included. Please specify the manufacturer and model number of the lock to ensure compatibility. (Not available on Security Fire Extinguisher Cabinets)

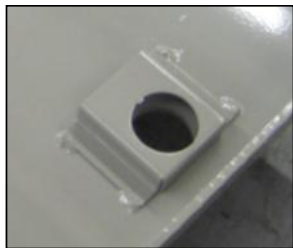
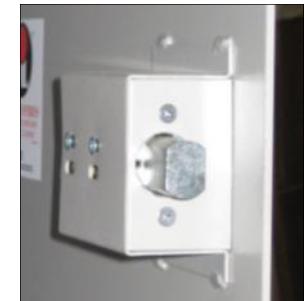
JL can provide lock model 5017 at additional cost

### Mortise Deadbolt Prep (MDP) ►

This option is available at additional cost and includes a lock mechanism which is prepped for a mortise cylinder and cam to be provided and installed by others. The prep includes a 2-1/2" x 3-1/2" x 1-3/4" case with installed Lori assembly with 1" x 5/8" throw.

Lock and mounting screws are not included. The mortise cylinder must be 1-1/8" (3.2cm) in diameter and the recommended cylinder length is 1-1/2" (3.8 cm). (A longer cylinder can be adapted to it by using a rose spacer. The cam must be an Adam Rite cam.)

JL can provide lock models 9130 or 1E74 at additional cost.



### ◀ Mortise Cylinder Cam Lock Prep (MP)

This option is available at additional cost and includes a door which is prepped for a mortise cylinder and cam to be provided for and installed by others. Lock and mounting bolts are not included. The mortise cylinder must be 1-1/8" (3.2cm) in diameter and the recommended cylinder length is 1-1/2" (3.8 cm). (A longer cylinder can be adapted to it by using a rose spacer) The cam must be 7/16" (1.91 cm) long, as measured from the edge of the cylinder to the tip of the cam.

JL can provide lock models 9130 or 1E74 at additional cost.



JL INDUSTRIES

**ACTIVAR**  
INC.  
Construction Products Group

A DIVISION OF

www.activarcpg.com

**SECURITY LOCK PREP OPTIONS FOR  
SP - SECURITY ACCESS PANEL  
HSP - HIGH SECURITY ACCESS PANEL  
SECURITY /DETENTION FIRE EXTINGUISHER CABINET**

JLSOPTIONS

**Detention Deadlock Installed (DDI5010)▶**

Right-handed, heavy-duty detention lock installed at the factory. The prep plate is factory welded, primed & painted as an integral part of the door. Model 5010 is a medium security deadbolt with a single piece, paracentric key cylinder in a high tensile strength, alloy steel case, keyed 1 side. The deadbolt is fabricated of 1-1/2" x 3/4" hot rolled steel with a 5/8" throw. All steel parts are plated for corrosion resistance. Dimensions 1-1/4" x 4-1/2" x 3". Please specify the number of keys to be ordered with this lock. Keys to be ordered separately. Pinned Torx bolts secure the lock to the door.



**Security Key**

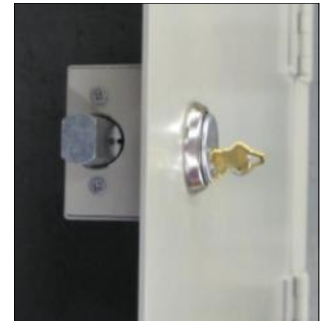


**◀ (DD15017) Detention Slam Lock Installed**

Right-handed, heavy-duty detention lock installed at the factory. The prep plate is factory welded, primed & painted as an integral part of the door. Model 5017 is a medium security slam latch with a stainless steel latchbolt with 1" x 7/16" throw. Slam-locks automatically when door is closed. Lock is constructed with a single piece, bronze alloy paracentric key cylinder, 5 tempered brass lever tumblers keyed one side(K1) in a high-tensile strength alloy steel case. All steel parts plated for corrosion resistance. Dimensions: 1 1/4" x 4" x 2 3/4". Please specify the number of keys to be ordered with this lock. Keys to be ordered separately. Pinned TORX bolts secure the lock to the door.(Not available on Security Fire Extinguisher Cabinets)

**Mortise Deadbolt Installed (MDP-SL-AMP or MDP-SL-1E74)▶**

Mortise deadbolt installed at the factory includes a 2-1/2" x 3-1/2" x 1-3/4" case welded to the door with installed Lori assembly with 1" x 5/8" throw. Select from lock models 9130 (**MDP-SL-AMP**) (in satin chrome with Yale Standard cam and keys (drilled 6 pin, keyed 5 pin), or 1E74 (**MDP-SL-1E74**) with blank construction core to be keyed on site. Both locks are machined from solid brass bar stock. The mortise cylinder is 1-1/8" (3.2cm) in diameter and the cylinder length is 1-1/2" (3.8 cm). Security Torx bolts secure the lock to the door.



**9130 Key**



**◀ (MP-SL-AMP or MP-SL-1E74) Mortise Cylinder Cam Lock Installed**

Cylinder lock with heavy-duty 7/16" cam installed at the factory. The prep plate is factory welded, primed & painted as an integral part of the door. Select from lock models 9130 (**MP-SL-AMP**) with 2 Yale Standard keys, or 1E74 (**MP-SL-1E74**) with a blank construction core to be keyed on site. Both locks are machined from solid brass bar stock. The mortise cylinder is 1-1/8" (3.2cm) in diameter and the cylinder length is 1-1/2" (3.8 cm).



JL INDUSTRIES

**ACTIVAR**  
INC.

Construction Products Group

A DIVISION OF

www.activarcpg.com

**SECURITY LOCK OPTIONS FOR  
SP - SECURITY ACCESS PANEL**

**HSP - HIGH SECURITY ACCESS PANEL**

**SECURITY /DETENTION FIRE EXTINGUISHER CABINET**

**LSOPTIONS**

HEADQUARTERS & CUSTOMER SERVICE:4450 WEST 78<sup>TH</sup> ST CIRCLE, BLOOMINGTON, MN 55435-5416 PH: 800-554-6077 FAX: 952-835-2218 EMAIL: SALES@JLINDUSTRIES.COM WWW.ACTIVARCPG.COM  
ACPG SOUTHEAST (THOMAS ENTERPRISES):FT MEYERS, FL PH: 239-693-7500 ACPG WEST COAST (SAMSON MFG): COMMERCE, CA WAREHOUSES: DALLAS TX, LANCASTER PA, ATLANTA GA, CHICAGO, IL