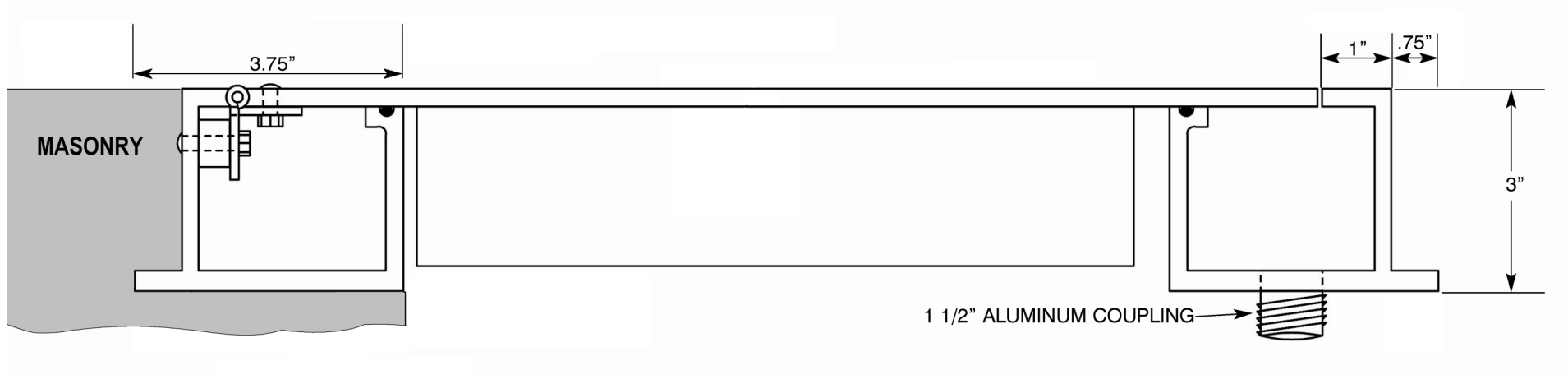


1. Verify that the vault access door installation does not interfere with nearby installations.
2. Set top of frame at finished floor elevation in 3" or deeper recess as required for floor covering. Floor door is to be installed with sufficient slope for liquids to drain toward drain hole.
3. Attach drain pipe to coupling on the frame.
4. Block securely in place to avoid movement during concrete placing and finishing operations.



JL INDUSTRIES

ACTIVAR
INC.

Construction Products Group

A DIVISION OF

www.activarcpg.com

INSTALLATION INSTRUCTIONS FOR ALUMINUM GUTTER FLOOR DOOR

HEADQUARTERS & CUSTOMER SERVICE: 4450 WEST 78TH ST CIRCLE, BLOOMINGTON, MN 55435-5416 PH: 800-554-6077 FAX: 952-835-2218 EMAIL: SALES@JLINDUSTRIES.COM WWW.ACTIVARCPG.COM
ACPG SOUTHEAST (THOMAS ENTERPRISES): FT MEYERS, FL PH: 239-693-7500 ACPG WEST COAST (SAMSON): COMMERCE, CA WAREHOUSES: DALLAS TX, LANCASTER PA, ATLANTA GA, CHICAGO, IL